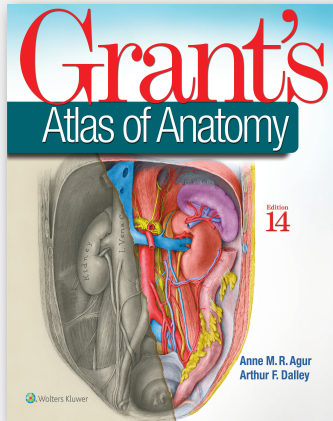


Grant's Atlas of Anatomy

Fourteenth Edition

NEW!



Anne M. R. Agur,
BSc (OT), MSc, PhD
University of Toronto, Canada

Arthur F. Dalley, II,
PhD, FAAA
Vanderbilt University School
of Medicine, Nashville, TN

February 2016 • 896 pages
1600 illustrations
ISBN 978-1-4698-9068-5

Guidance for Today's Anatomy Lab

Illustrations drawn from real specimens, presented in surface-to-deep dissection sequence, set *Grant's Atlas of Anatomy* apart as the most accurate reference available for learning human anatomy. These realistic representations, along with surface anatomy photographs and medical imaging, provide students with the ultimate lab resource.

For more than seventy years, *Grant's Atlas of Anatomy* has continually adapted to meet the needs of each generation of students, while maintaining the *Grant's* tradition of excellence.

New to this Edition

The meticulously updated fourteenth edition is a visually stunning reference that delivers the accuracy, pedagogy, and clinical relevance expected of this classic atlas, with new features that make it even more practical and user-friendly:

- **Recolorization of the original dissection-based illustrations** add a new level of organ luminosity and tissue transparency, and enable the formation of 3D constructs for each body region.
- **Schematic illustrations now feature a uniform style and consistent coloring**, clearly showing the relationships of structures and clarifying anatomical concepts.
- Newly revised **legends with highlighted clinical applications** describe the anatomic features and provide context for health care practice.
- **Enhanced medical imaging** includes more than 100 clinically significant MRIs, CT images, and ultrasound scans with corresponding orientation drawings.
- **Updated and improved tables** help organize muscles, vessels, and other anatomic information in an easy-to-use format ideal for review and study.
- **Table of Contents reordered** to match *Grant's Dissector*.
- **Updated and improved design and layout** to increase focus on primary illustrations.

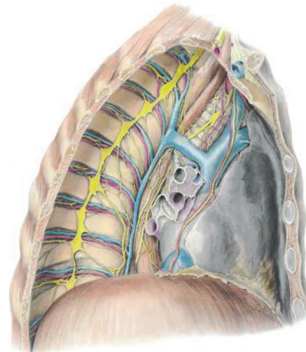
Grant's Atlas of Anatomy Fourteenth Edition

Table of Contents

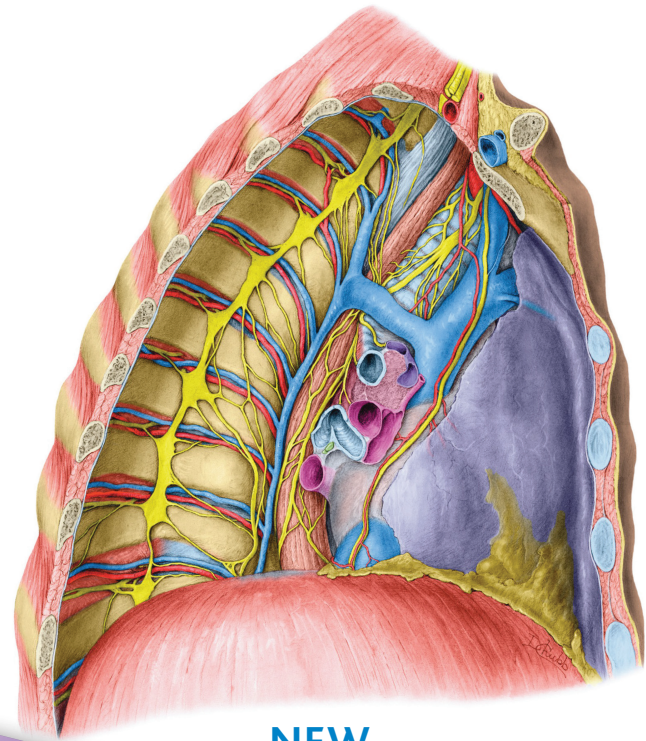
Introduction

1. Back
2. Upper Limb
3. Thorax
4. Abdomen
5. Pelvis and Perineum
6. Lower Limb
7. Head
8. Neck
9. Cranial Nerves

Enhanced Color and Detail in Illustrations



OLD



NEW

thePoint®

thepoint.lww.com

Student Resources

Videos from *Acland's Video Atlas of Human Anatomy*

558 Lower Limb SOLE OF FOOT

6.74 FIRST LAYER OF MUSCLES OF SOLE OF FOOT

A. Bones. B. Overview. C. Dissection. Muscles and neurovascular structures.

Muscle	Proximal Attachment	Distal Attachment	Innervation	Action
Abductor hallucis	Medial process of tuberosity of calcaneus, flexor digitorum profundus, and flexor digitorum brevis	Medial side of base of proximal phalanx of first digit	Medial plantar nerve (S2-S3)	Abducts and flexes first digit
Flexor digitorum brevis	Medial process of tuberosity of calcaneus, peroneus, and intermuscular septa	Both sides of middle phalanges of lateral four digits	Medial plantar nerve (S2-S3)	Flexes lateral four digits
Abductor digiti minimi	Medial and lateral processes of tuberosity of calcaneus, peroneus, and intermuscular septa	Lateral side of base of proximal phalanx of fifth digit	Lateral plantar nerve (S2-S3)	Abducts and flexes fifth digit

Although individual nerves do describe the primary function of the tibialis muscle of the foot, it is not collectively to resist forces that stress (stretch) to failure the arches of the foot.

Upper Limb 157

ANTERIOR WRIST AND PALM OF HAND

DISSECTION OF PALM, ULNAR, AND MEDIAN NERVES (continued)

2.74

to and does not pass through the carpal tunnel, thus, some of the carpal tunnel's (or more correctly, terminal motor) branches, which innervate the flexor muscles. Muscularity of the thumb, wrist, and proximal forearm, particularly sensory branches that supply the flexor tendons, are innervated by the median nerve and a small digital. However, recall that the recurrent branch of the median nerve is also one

KNEE JOINT Lower Limb 533

A. Coronal Section

B. Coronal MRI

C. Coronal MRI

6.55 CORONAL SECTION AND MRI OF KNEE

A. Section through intercondylar notch of femur, tibia, and fibula. B. MRI through intercondylar notch of femur and tibia. C. MRI through femoral condyles, tibia and fibula. Numbers in MRIs refer to structures (A) B, C, D, E, F, G, H, I, J, K, L, M, N, O, P, Q, R, S, T, U, V, W, X, Y, Z, AA, AB, AC, AD, AE, AF, AG, AH, AI, AJ, AK, AL, AM, AN, AO, AP, AQ, AR, AS, AT, AU, AV, AW, AX, AY, AZ, BA, BB, BC, BD, BE, BF, BG, BH, BI, BJ, BK, BL, BM, BN, BO, BP, BQ, BR, BS, BT, BU, BV, BW, BX, BY, BZ, CA, CB, CC, CD, CE, CF, CG, CH, CI, CJ, CK, CL, CM, CN, CO, CP, CQ, CR, CS, CT, CU, CV, CW, CX, CY, CZ, DA, DB, DC, DD, DE, DF, DG, DH, DI, DJ, DK, DL, DM, DN, DO, DP, DQ, DR, DS, DT, DU, DV, DW, DX, DY, DZ, EA, EB, EC, ED, EE, EF, EG, EH, EI, EJ, EK, EL, EM, EN, EO, EP, EQ, ER, ES, ET, EU, EV, EW, EX, EY, EZ, FA, FB, FC, FD, FE, FF, FG, FH, FI, FJ, FK, FL, FM, FN, FO, FP, FQ, FR, FS, FT, FU, FV, FW, FX, FY, FZ, GA, GB, GC, GD, GE, GF, GG, GH, GI, GJ, GK, GL, GM, GN, GO, GP, GQ, GR, GS, GT, GU, GV, GW, GX, GY, GZ, HA, HB, HC, HD, HE, HF, HG, HH, HI, HJ, HK, HL, HM, HN, HO, HP, HQ, HR, HS, HT, HU, HV, HW, HX, HY, HZ, IA, IB, IC, ID, IE, IF, IG, IH, II, IJ, IK, IL, IM, IN, IO, IP, IQ, IR, IS, IT, IU, IV, IW, IX, IY, IZ, JA, JB, JC, JD, JE, JF, JG, JH, JI, JJ, JK, JL, JM, JN, JO, JP, JQ, JR, JS, JT, JU, JV, JW, JX, JY, JZ, KA, KB, KC, KD, KE, KF, KG, KH, KI, KJ, KK, KL, KM, KN, KO, KP, KQ, KR, KS, KT, KU, KV, KW, KX, KY, KZ, LA, LB, LC, LD, LE, LF, LG, LH, LI, LJ, LK, LL, LM, LN, LO, LP, LQ, LR, LS, LT, LU, LV, LW, LX, LY, LZ, MA, MB, MC, MD, ME, MF, MG, MH, MI, MJ, MK, ML, MM, MN, MO, MP, MQ, MR, MS, MT, MU, MV, MW, MX, MY, MZ, NA, NB, NC, ND, NE, NF, NG, NH, NI, NJ, NK, NL, NM, NN, NO, NP, NQ, NR, NS, NT, NU, NV, NW, NX, NY, NZ, OA, OB, OC, OD, OE, OF, OG, OH, OI, OJ, OK, OL, OM, ON, OO, OP, OQ, OR, OS, OT, OU, OV, OW, OX, OY, OZ, PA, PB, PC, PD, PE, PF, PG, PH, PI, PJ, PK, PL, PM, PN, PO, PP, PQ, PR, PS, PT, PU, PV, PW, PX, PY, PZ, QA, QB, QC, QD, QE, QF, QG, QH, QI, QJ, QK, QL, QM, QN, QO, QP, QQ, QR, QS, QT, QU, QV, QW, QX, QY, QZ, RA, RB, RC, RD, RE, RF, RG, RH, RI, RJ, RK, RL, RM, RN, RO, RP, RQ, RR, RS, RT, RU, RV, RW, RX, RY, RZ, SA, SB, SC, SD, SE, SF, SG, SH, SI, SJ, SK, SL, SM, SN, SO, SP, SQ, SR, SS, ST, SU, SV, SW, SX, SY, SZ, TA, TB, TC, TD, TE, TF, TG, TH, TI, TJ, TK, TL, TM, TN, TO, TP, TQ, TR, TS, TT, TU, TV, TW, TX, TY, TZ, UA, UB, UC, UD, UE, UF, UG, UH, UI, UJ, UK, UL, UM, UN, UO, UP, UQ, UR, US, UT, UY, UZ, VA, VB, VC, VD, VE, VF, VG, VH, VI, VJ, VK, VL, VM, VN, VO, VP, VQ, VR, VS, VT, VU, VV, VW, VX, VY, VZ, WA, WB, WC, WD, WE, WF, WG, WH, WI, WJ, WK, WL, WM, WN, WO, WP, WQ, WR, WS, WT, WU, WV, WW, WX, WY, WZ, XA, XB, XC, XD, XE, XF, XG, XH, XI, XJ, XK, XL, XM, XN, XO, XP, XQ, XR, XS, XT, XU, XV, XW, XX, XY, XZ, YA, YB, YC, YD, YE, YF, YG, YH, YI, YJ, YK, YL, YM, YN, YO, YP, YQ, YR, YS, YT, YU, YV, YW, YX, YY, YZ, ZA, ZB, ZC, ZD, ZE, ZF, ZG, ZH, ZI, ZJ, ZK, ZL, ZM, ZN, ZO, ZP, ZQ, ZR, ZS, ZT, ZU, ZV, ZW, ZX, ZY, ZZ